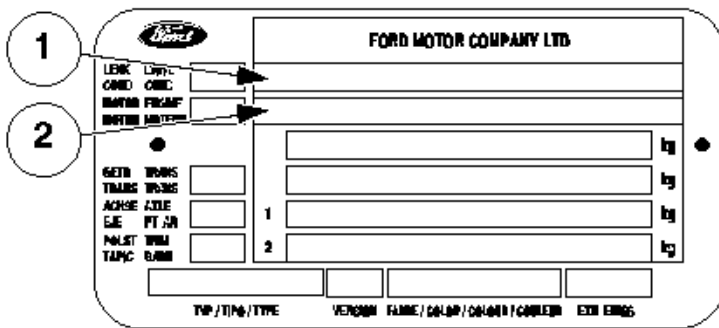


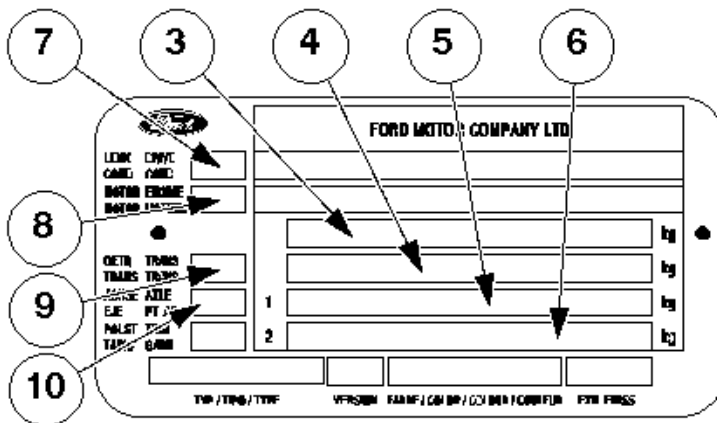
VIN Plate Details



(Box 1) Type Approval Number A unique code required by legislation in certain territories

(Box 2) Vehicle Identification Number (VIN)

Try my [automated VIN Decoder](#)



(BOX 3) Gross Vehicle Weight Indicates maximum legal laden mass, in territories where this is required

(Box 4) Gross Train Mass Indicates the maximum combined mass of vehicle and trailer or caravan

(Box 5) Permitted Front Axle Loading
Maximum permissible load on the front wheels of the vehicle

(Box 6) Permitted Rear Axle Loading
Maximum permissible load on the rear wheels of the vehicle

(Box 7) Steering

Code	1	A	2	A
Drive	Left	Left	Right	Right

(Box 8) Engine

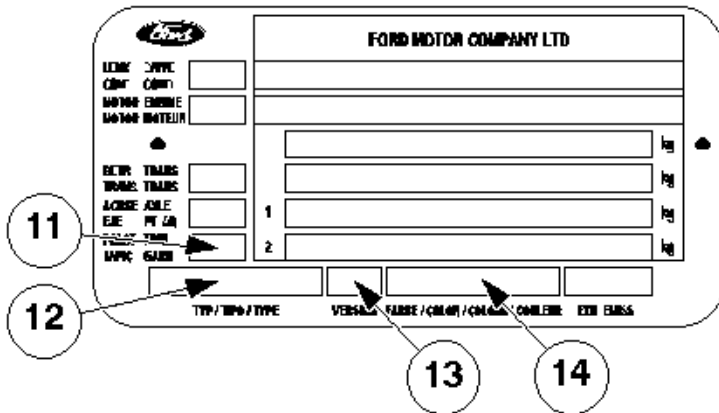
Code	Type	Capacity litres	Power KW (DIN)
L1	DOHC 16V EFI (Zetec)	1.6	66
RK	DOHC 16V EFI (Zetec)	1.8	84
NG	DOHC 16V EFI (Zetec)	2.0	102
RF	OHC DIESEL	1.8	44
SE	DOHC EFI V6	2.5	160

(Box 9) Transmission

Code	6	Q
Type	CD4E	MTX75

(Box 10) Axle

First Code	7	6	4	E	B	K	F
Axle Ratio	3.41:1	3.82:1	3.82:1	3.92:1	4.06:1	3.77:1	3.84:1



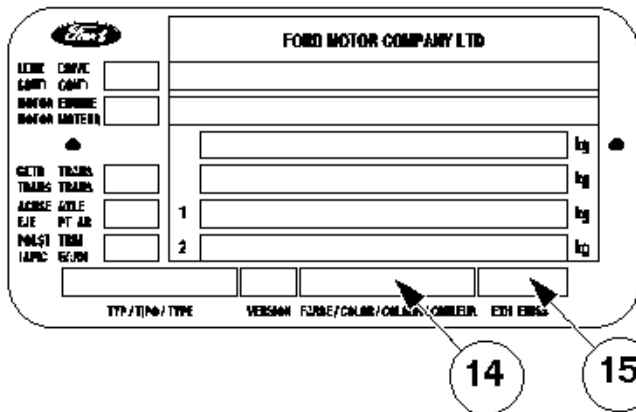
(Box 11) Interior Trim

First Code	D	H	J	K	L	M	N	S	U
Colour	Pumice	Opal	Atlantis Blue	Kappa	Flight	Liberty	Dune	Raven	Leather

(Box 12) Type

First Digit	Second Digit	Third Digit
Model	Body Type	Year Homologated
N/A	A - 5 door Hatchback F - 4 door Saloon N - 5 door estate	

(Box 13) Version Provision for locally required codes by certain territories



(Box 14) Body Colour

First Digit

- A - Black (XSC 632)
- B - Diamond White (XSC 691)
- C - Electric Current (XSC 2707)
- D - Petrol Blue (XSC 2763)
- E - Nouveau Red (XSC 2472 CM)
- F - Java Blue (XSC 2544 CM)
- F - Astor Grey (XSC 2848)
- G - Coral Red (XSC 2701 C)
- G - Panther Black (XSC 2851)
- H - Cayman Blue (XSC 2696 CM)
- J - Pacifica Blue (XSC 2360)
- K - State Blue (XSC 2772)
- L - Mallard Green (XSC 2683)
- M - Dark Maroon (XSC 2776)
- N - Ash Black (XSC 2743)

P - Radiant Red (XSC 2251)
Q - Pumice Gold (XSC 2627 C)
Q - Samakand (XSC 2810)
R - Citrine Yellow (XSC 2725)
R - Cuirass (XSC 2858)
U - Garnet Red (XSC 2727)
U - Belladonna (XSC 2813)
V - Isis Blue (XSC 2728)
X - Chianti Red (XSC 2635)
Z - Rimini Blue (XSC 2639)
Z - Tourmallard Green (XSC 2756)
1 - Levante Grey (XSC 2554 CM)
2 - Ontario Blue (XSC 2713)
3 - Juice Green (XSC 2790)
4 - Tourmaline Green (XSC 2547)
6 - Stardust Silver (XSC 2724C)
7 - Dark Aubergine (XSC 2747)
8 - Mistral Blue (XSC 2753)
9 - Alberto Green (XSC 2698C)

Second Digit

For vehicles built in Continental plants, the second digit of the paint code denotes the original model year of that colour's introduction, i.e '0' = colour introduction in 1990 model year.

For vehicles built in UK plants, the second digit of the paint code denotes the current model year, i.e '0' = built in 1990 model year.

(Box 15) Exhaust Emissions

Code	-	X	U	H	1
Exhaust Emission Level	15.04	EEC 5th	83 US (Petrol) 87 US (Diesel)	EEC 5th (Reduced Severity)	96EEC

*Mad Moles Mondeo Madness, © Mad Mole 2001. You may see the Molemobile fly past in the Sutton area (Surrey). [Return to Home page](#)
 Contact me on madmole@btinternet.com*

This page was updated on Tuesday 1 April 103, just 3363 days ago.