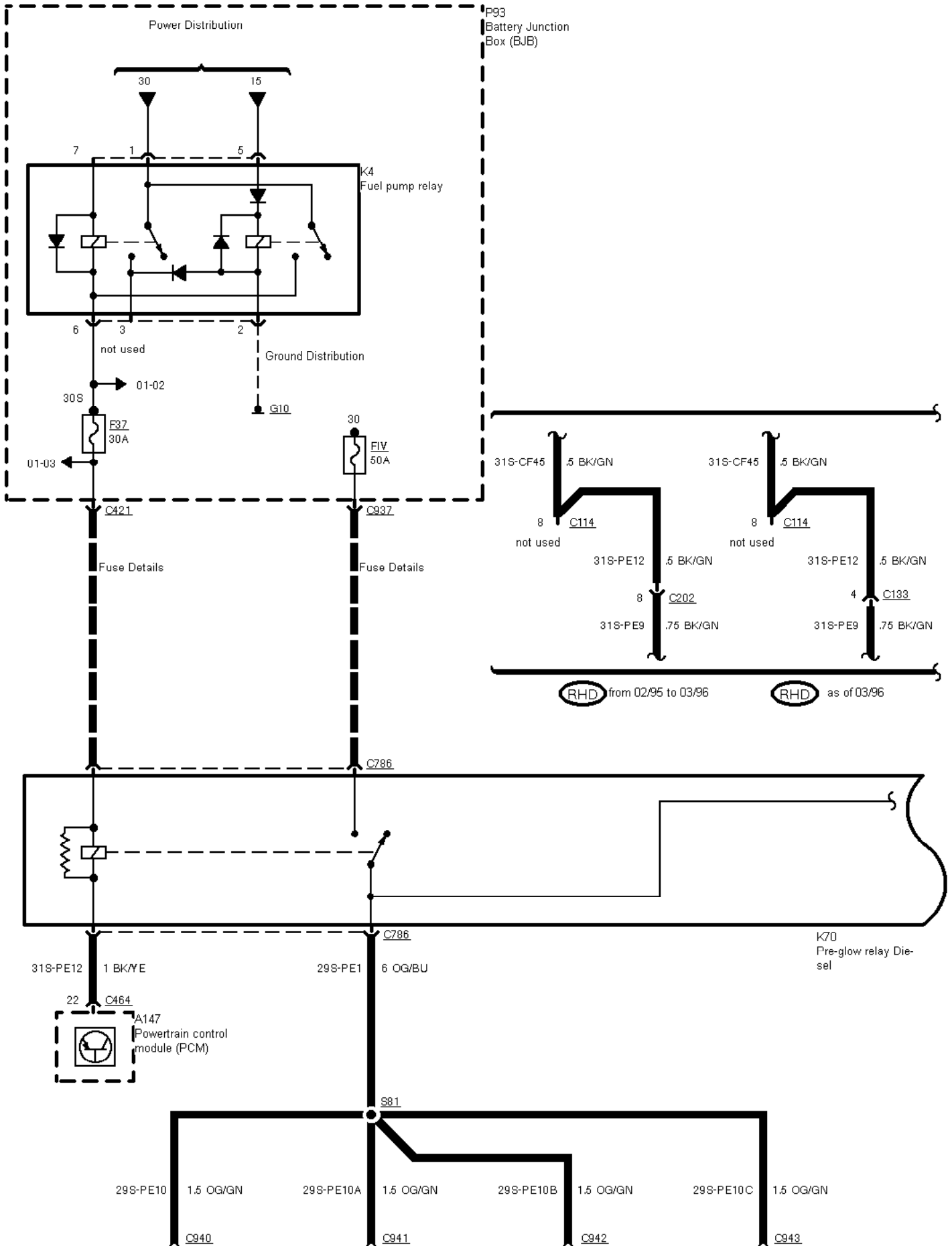
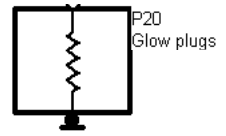
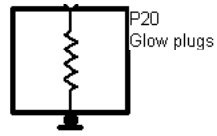
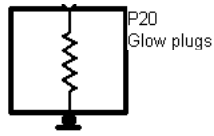
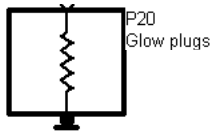
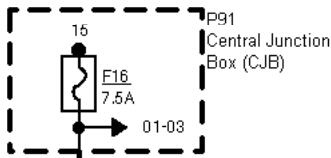

29-06-001 , Engine Control 2,5 l TCI Diesel (Manual Transmission) , Before 09/96, Pre-glow system



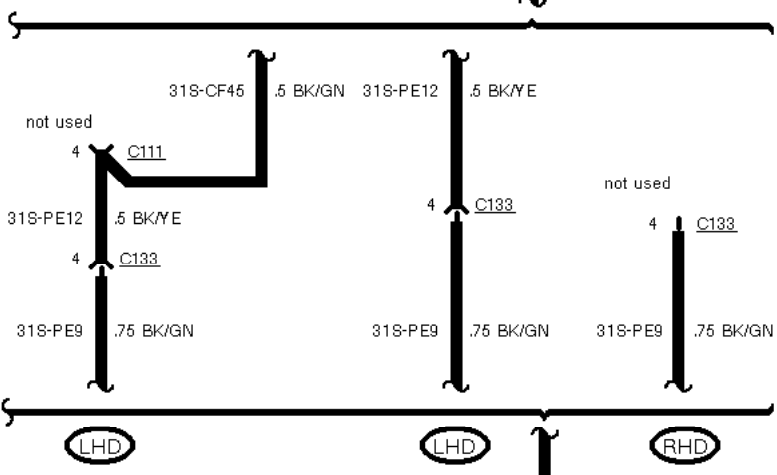
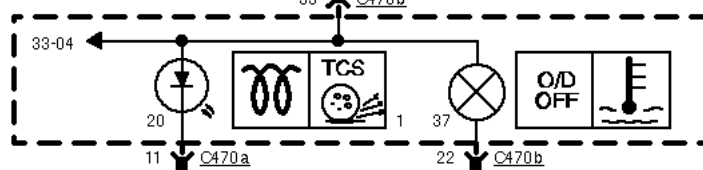


29-06-002 , Engine Control 2,5 I TCI Diesel (Manual Transmission) , Before 09/96, Pre-glow system

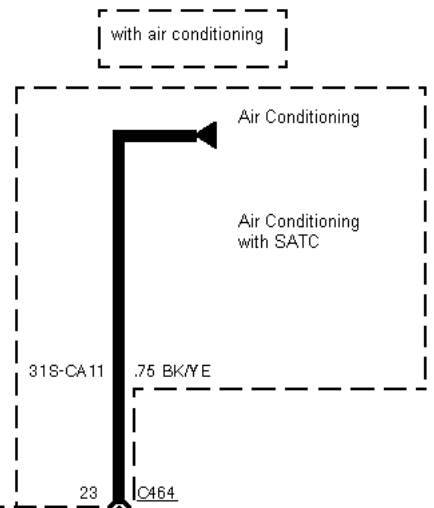
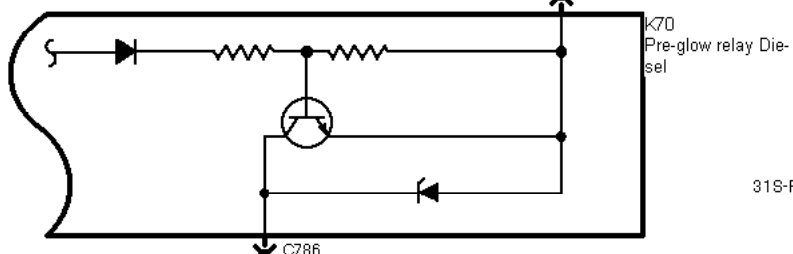


C601
Fuse Details

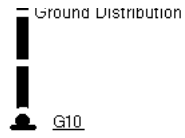
S85
94-WC58 .5 VT/BK
33



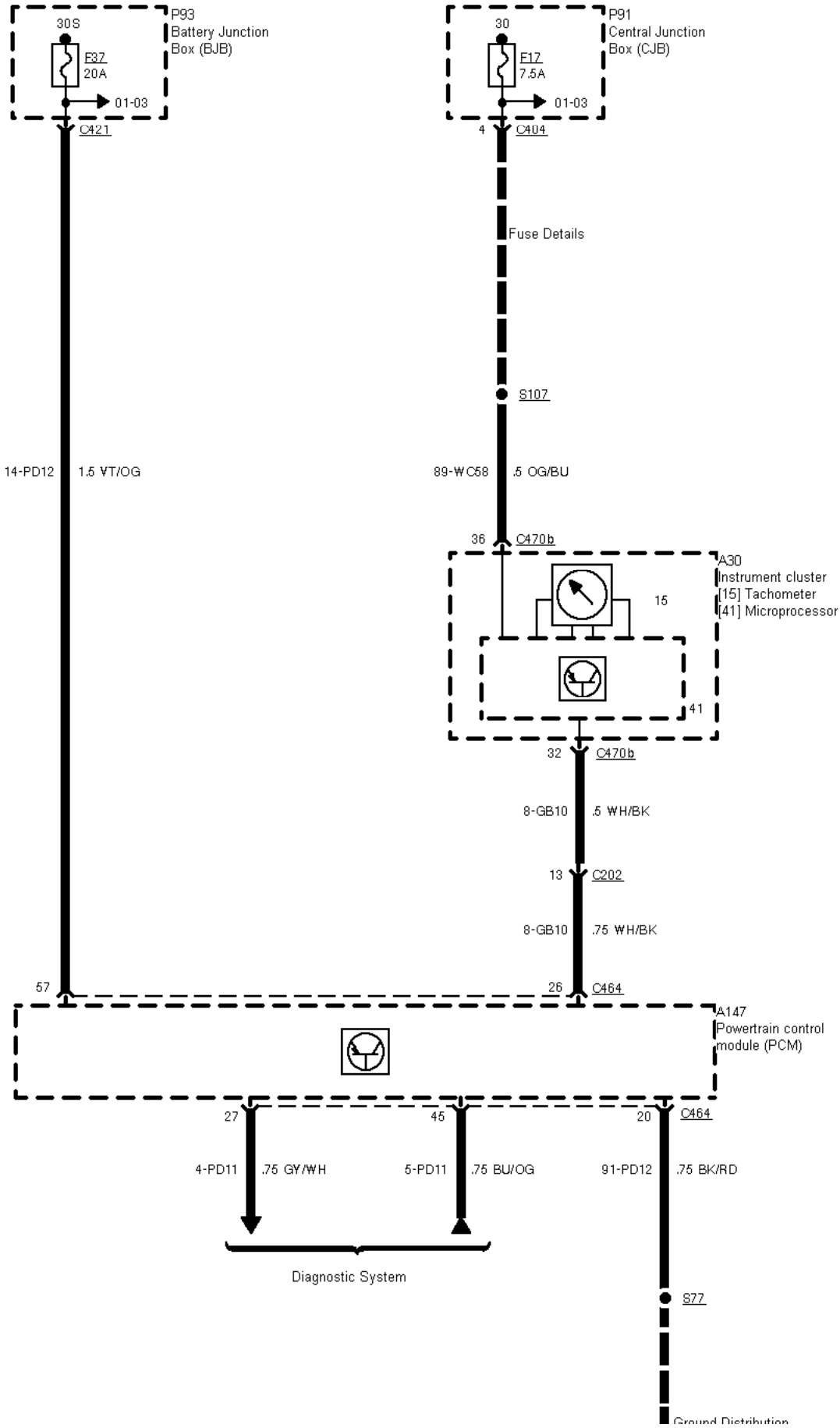
LHD except Taxi
LHD Taxi
RHD before 02/95



Ground Distribution

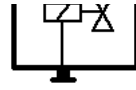
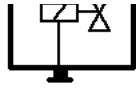


29-06-003 , Engine Control 2,5 I TCI Diesel (Manual Transmission) , Before 09/96

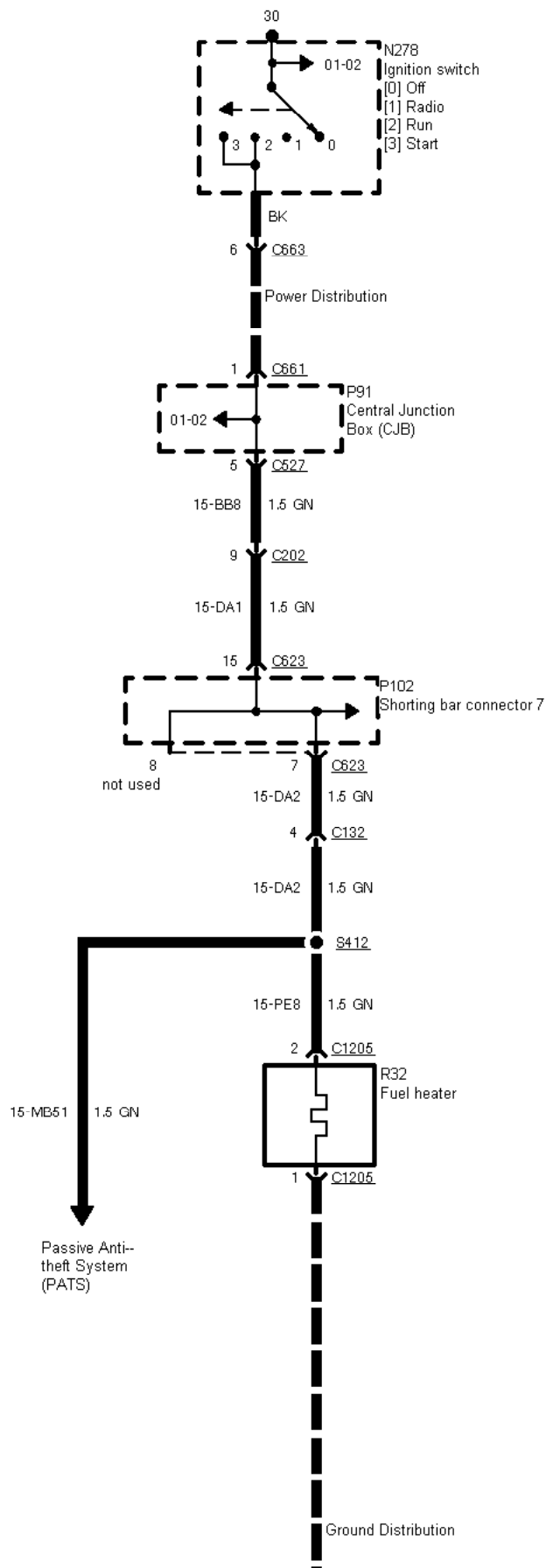




29-06-004 , Engine Control 2,5 I TCI Diesel (Manual Transmission) , Before 03/96

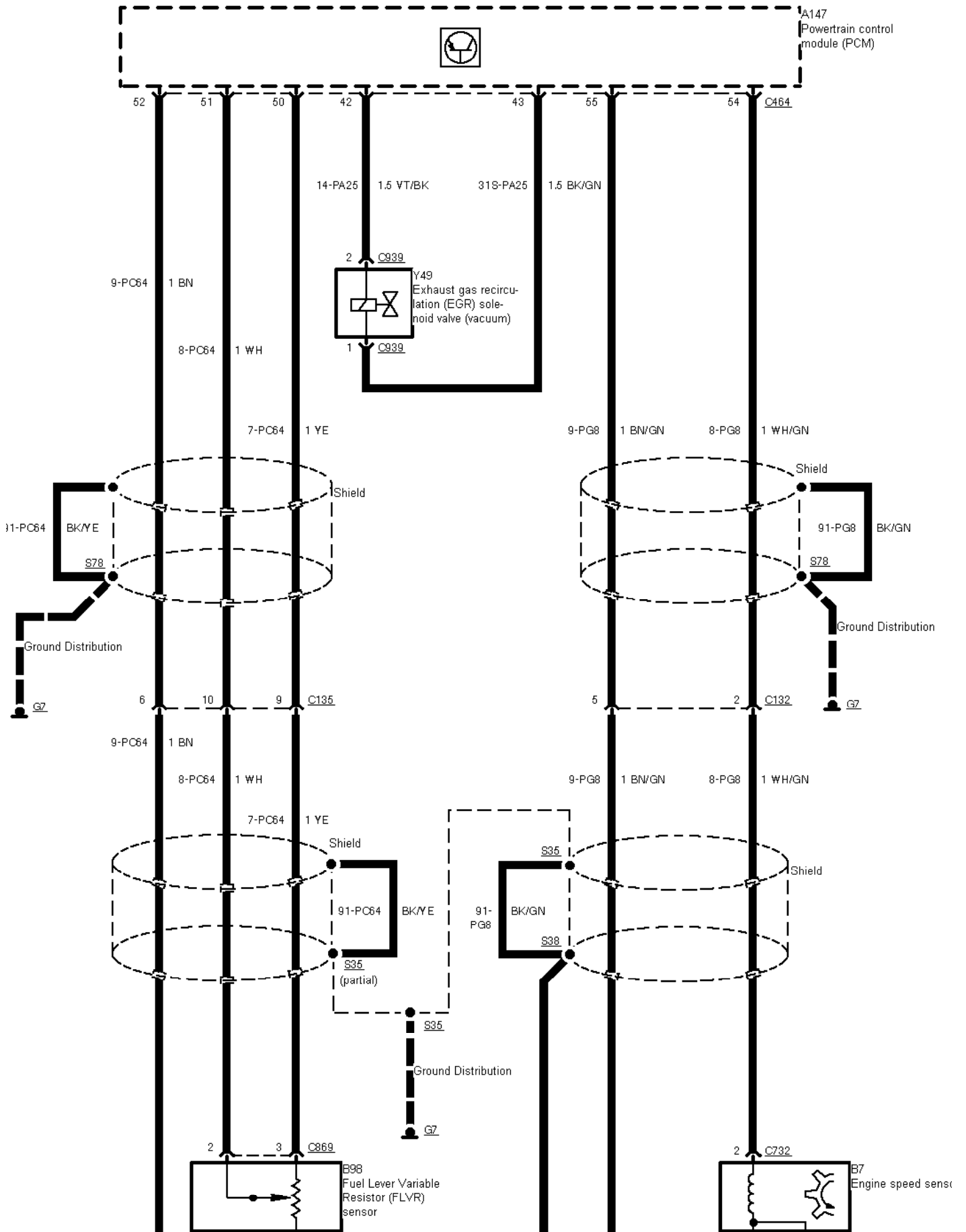


29-06-005 , Engine Control 2,5 I TCI Diesel (Manual Transmission) , from 03/96 to 09/96



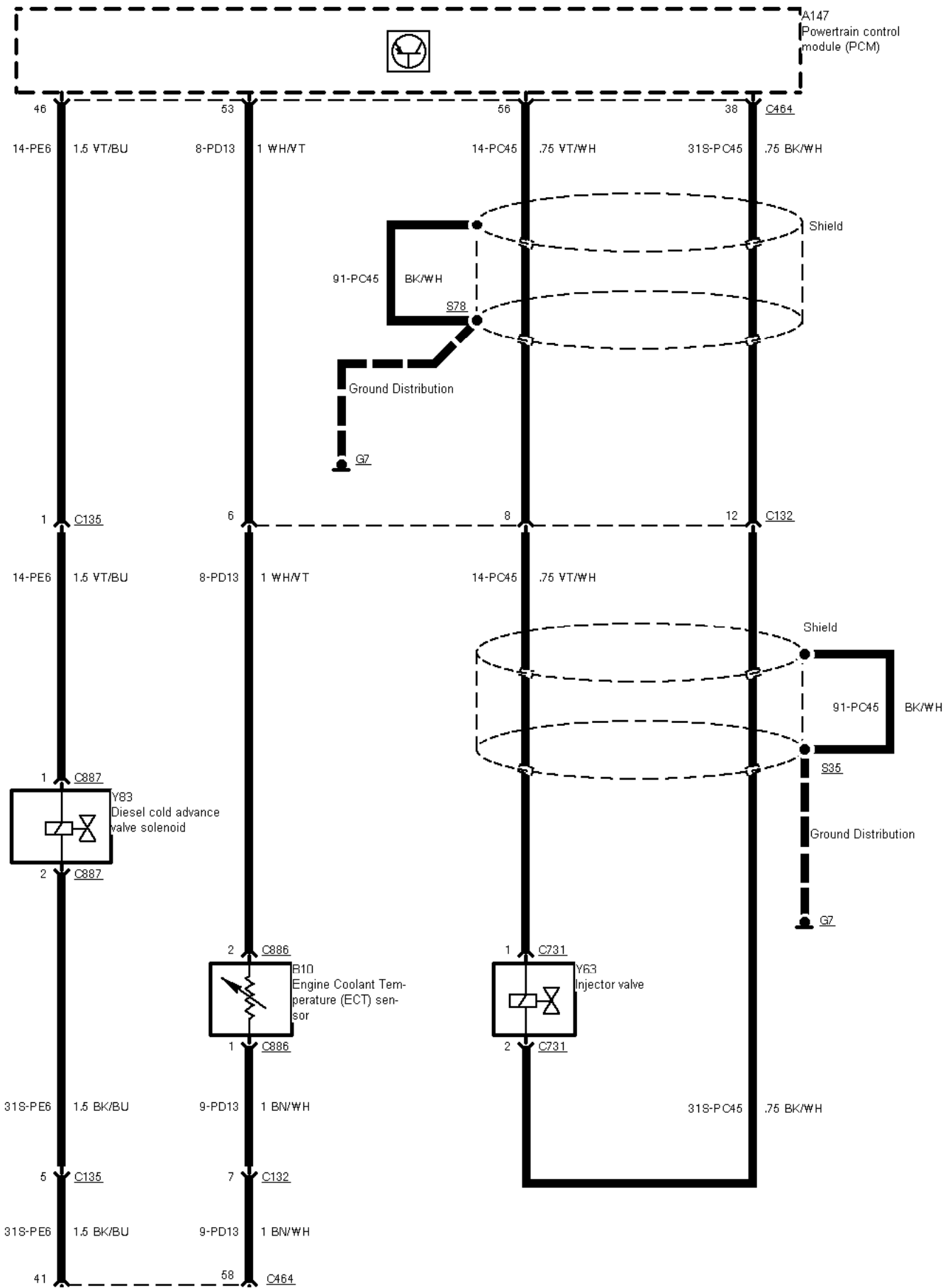


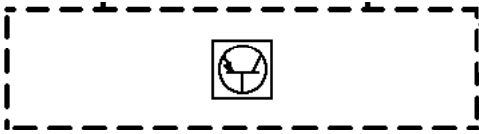
29-06-006 , Engine Control 2,5 I TCI Diesel (Manual Transmission) , Before 09/96, Sensors





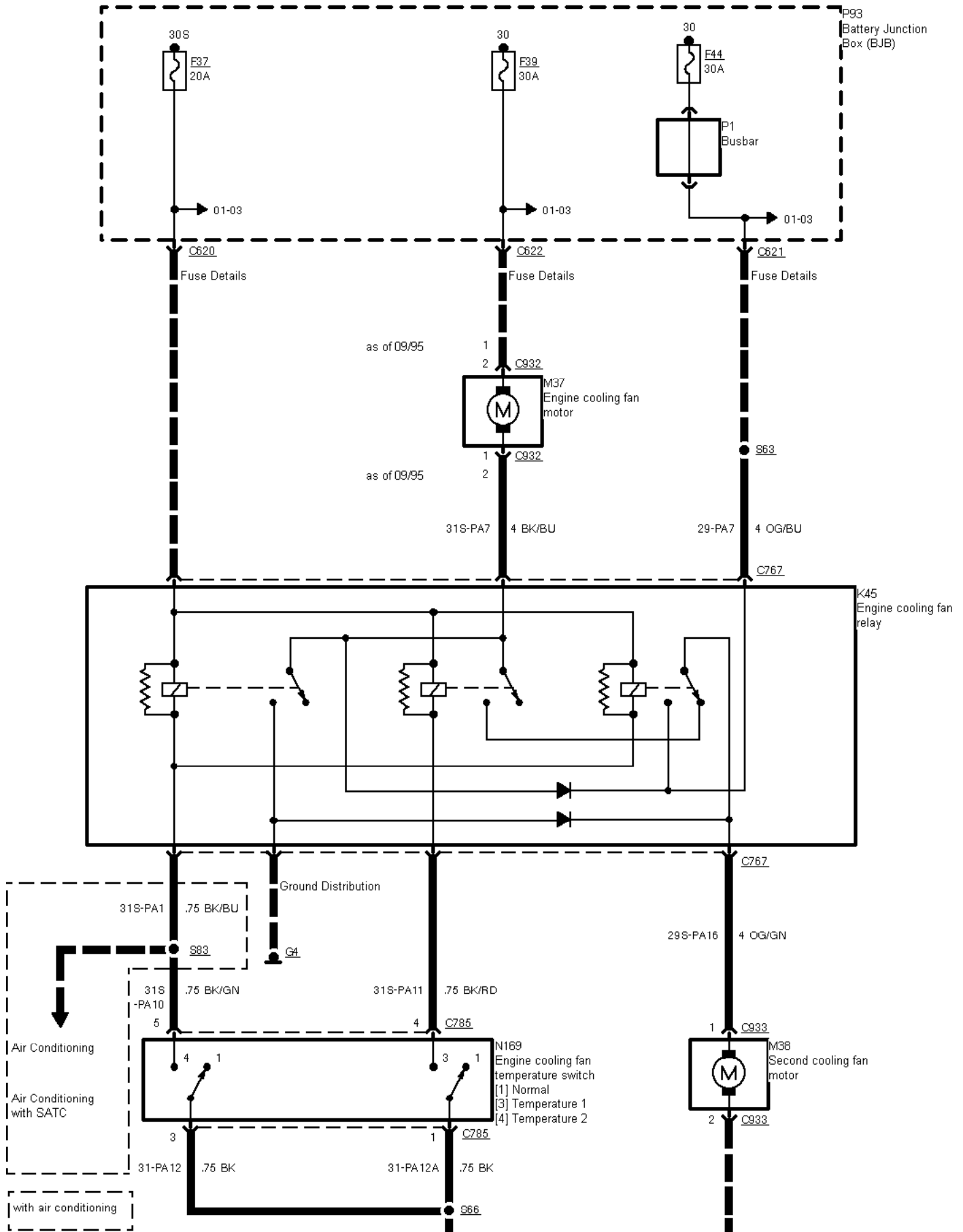
29-06-007 , Engine Control 2,5 l TCI Diesel (Manual Transmission) , Before 09/96, Sensors

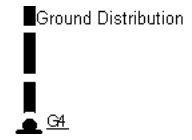
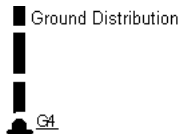




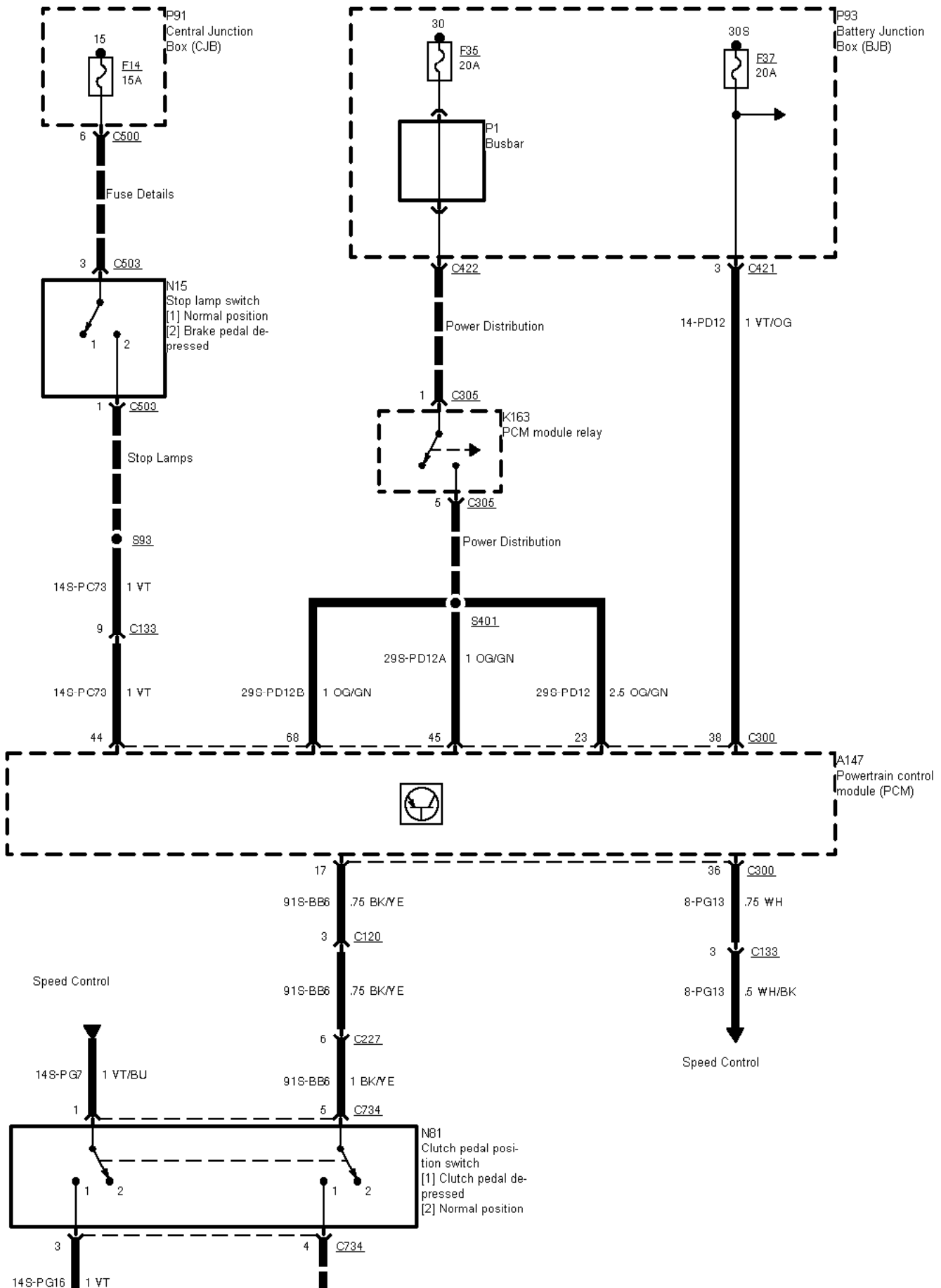
A147
Powertrain control
module (PCM)

29-06-008 , Engine Control 2,5 l TCI Diesel (Manual Transmission) , Before 09/96, Engine cooling fan





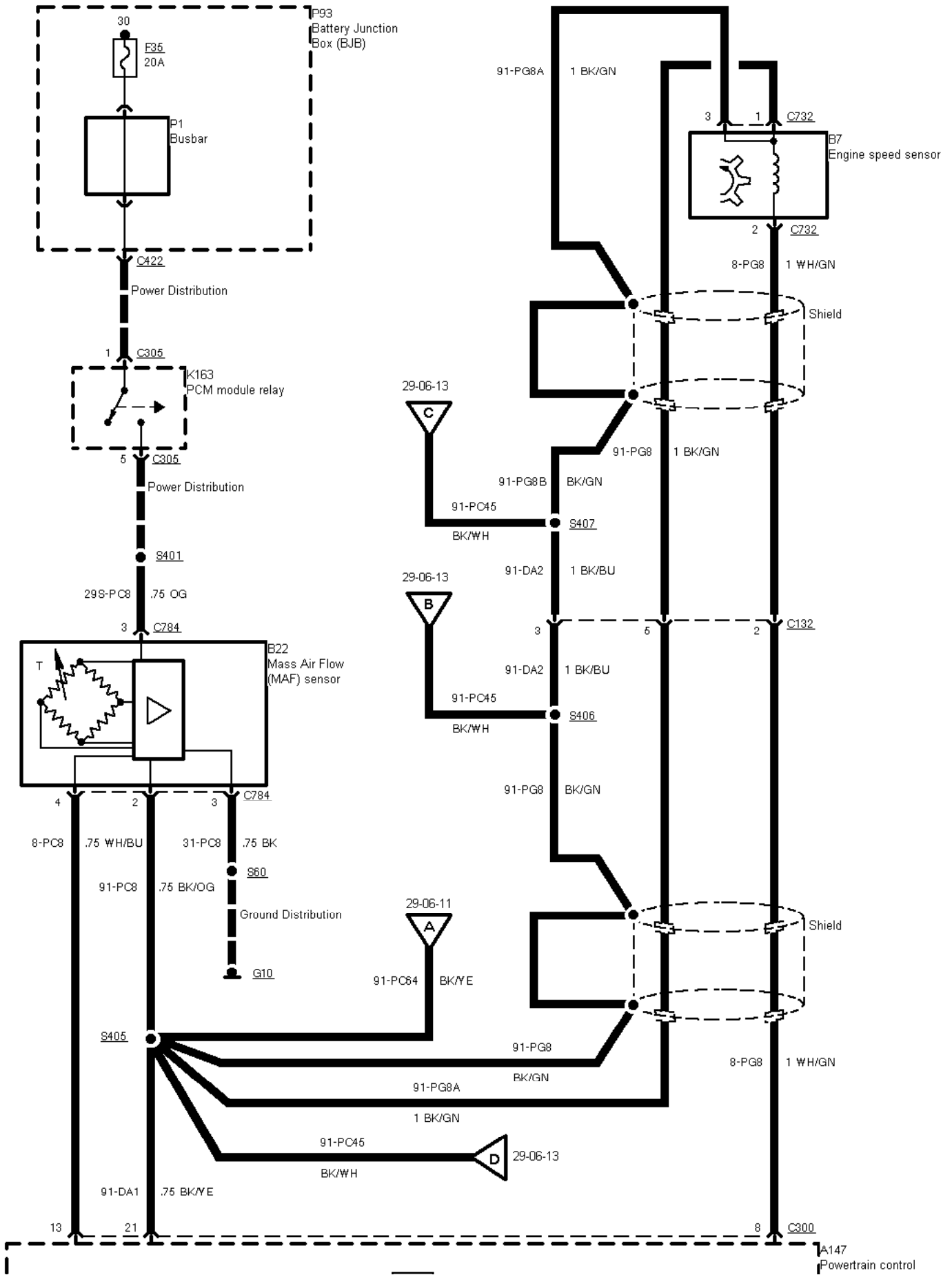
29-06-009 , Engine Control 2,5 I TCI Diesel (Manual Transmission) , As of 09/96



↓
Speed Control

↓
Ground Distribution
↓
G10

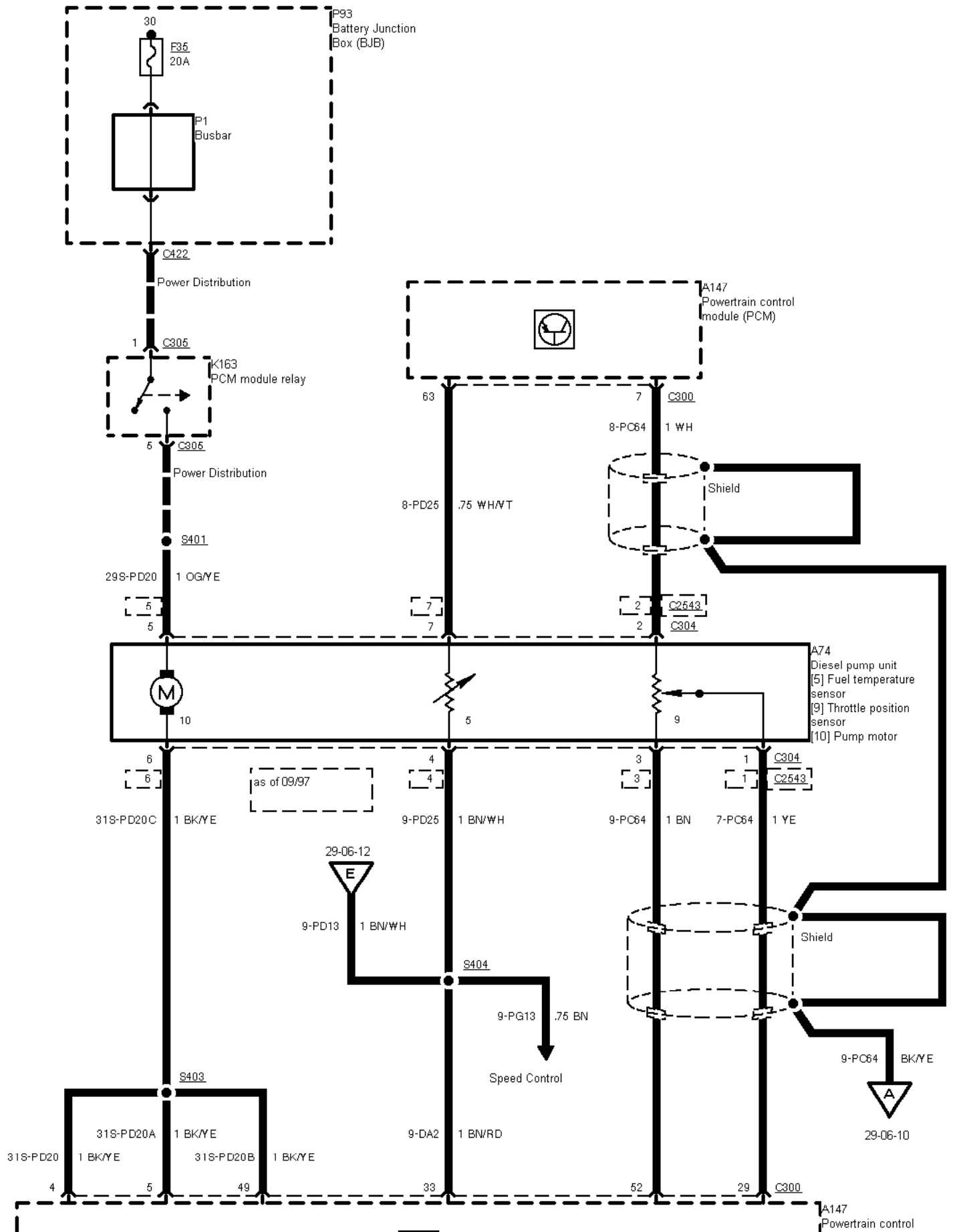
29-06-010 , Engine Control 2,5 I TCI Diesel (Manual Transmission) , As of 09/96





module (PCM)

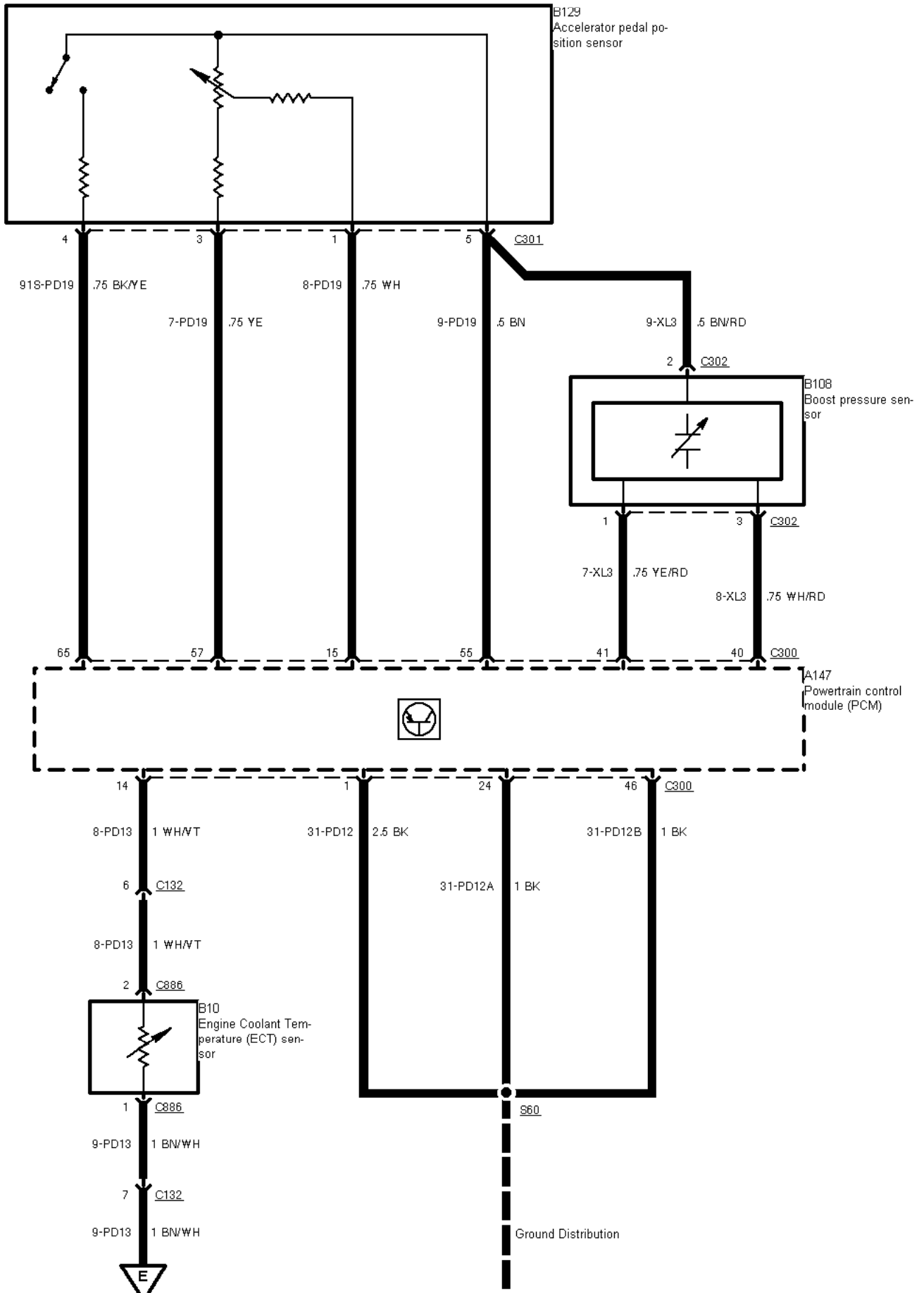
29-06-011 , Engine Control 2,5 I TCI Diesel (Manual Transmission) , As of 09/96



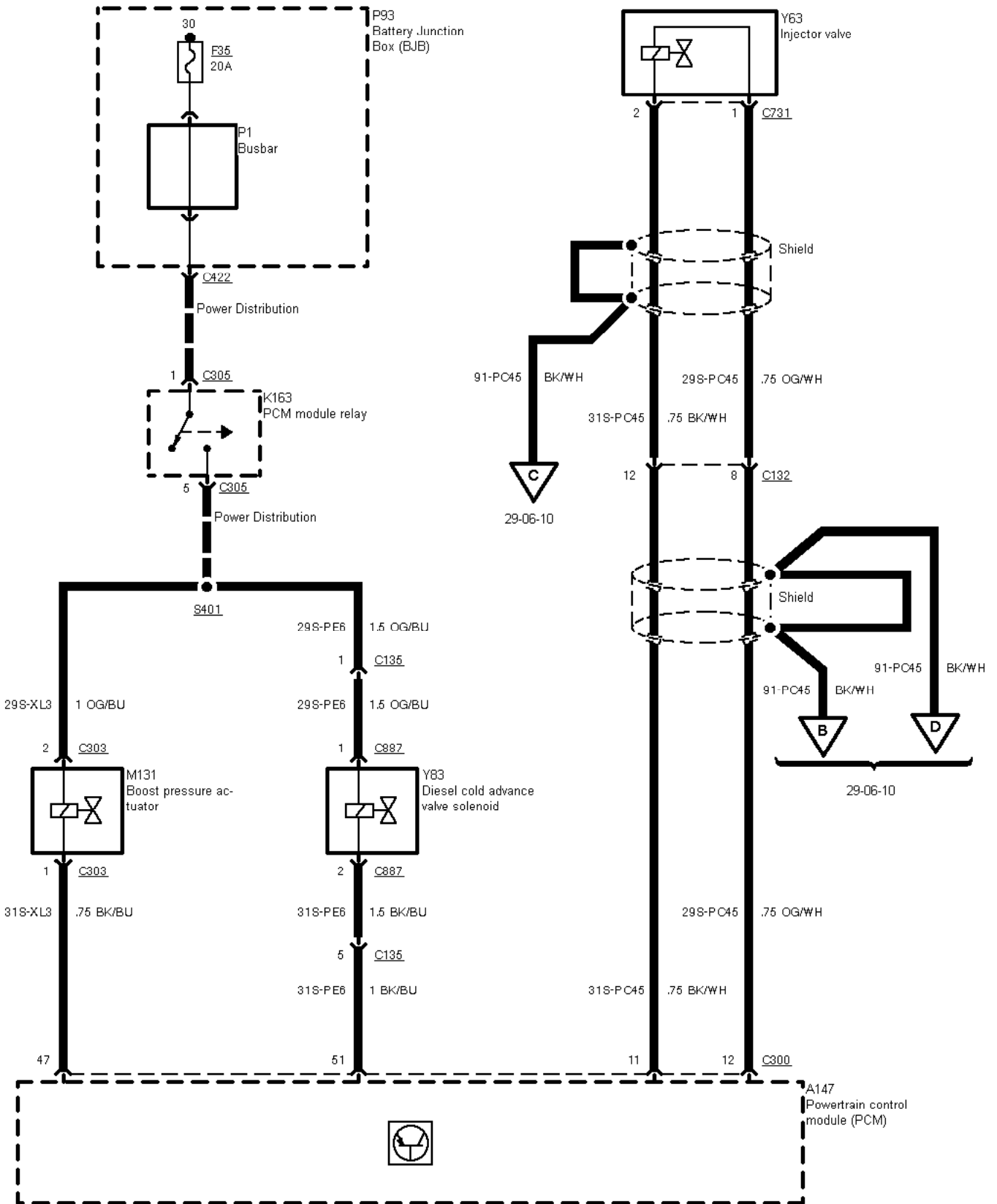


module (PCM)

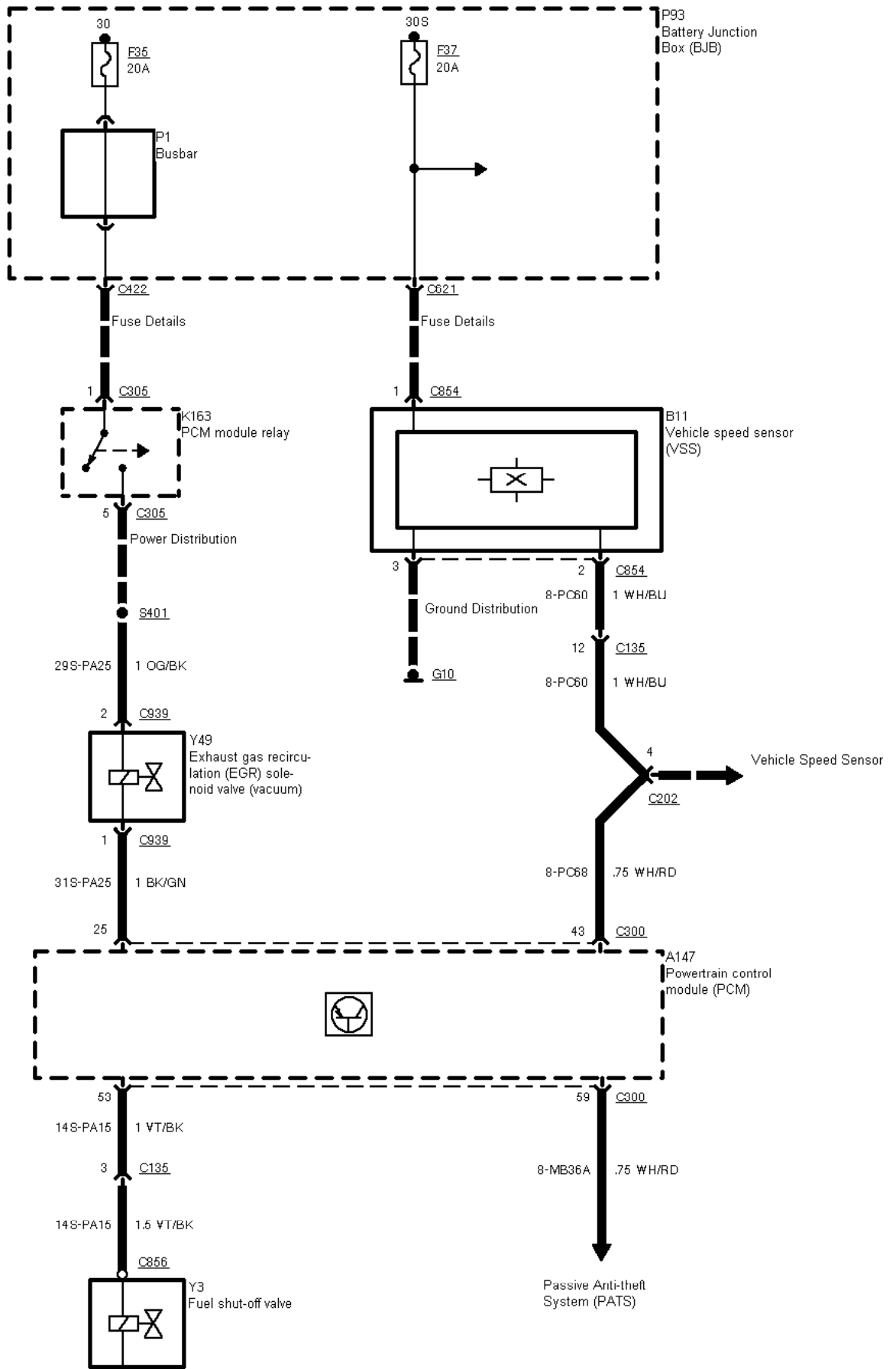
29-06-012 , Engine Control 2,5 l TCI Diesel (Manual Transmission) , As of 09/96



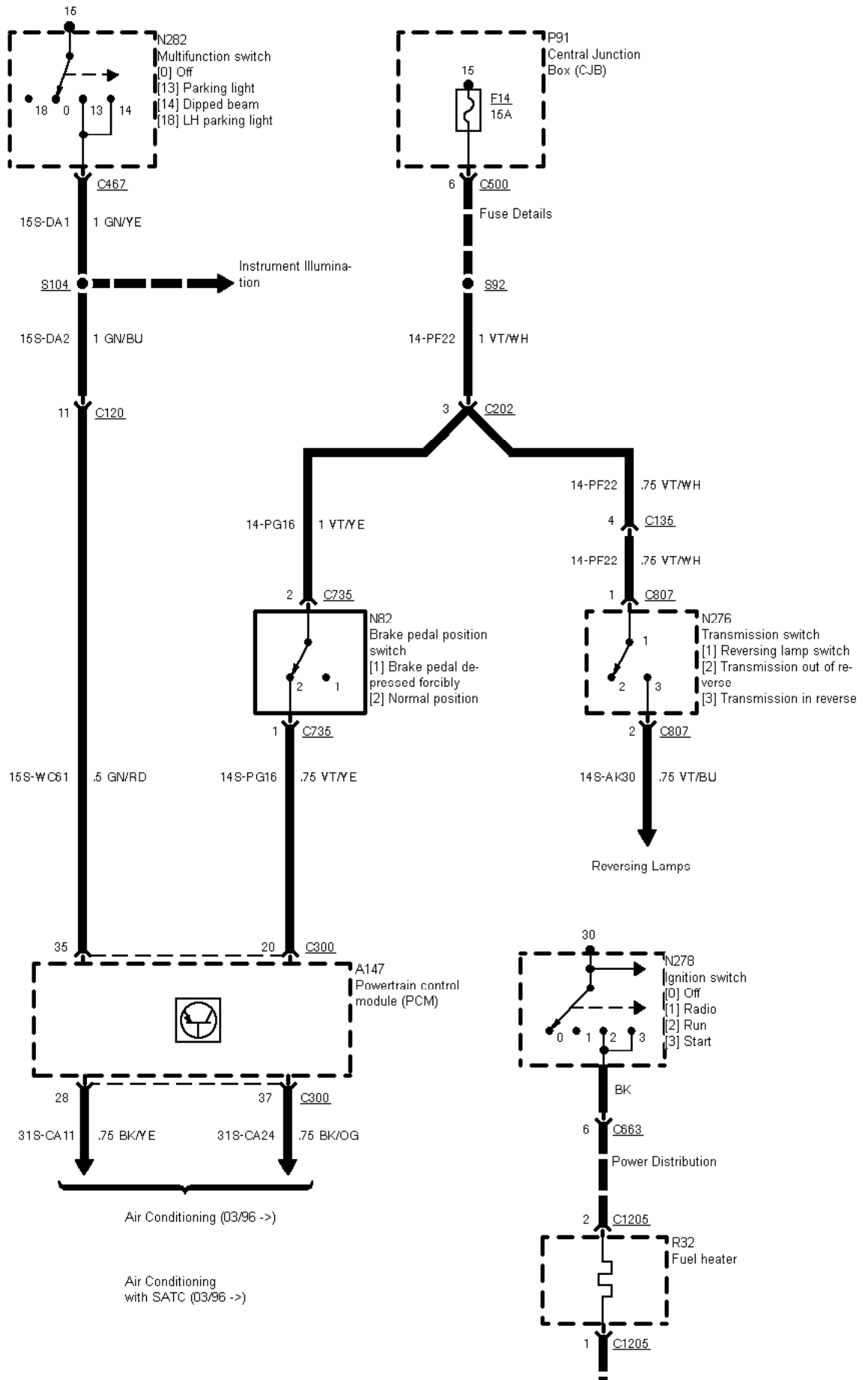
29-06-013 , Engine Control 2,5 l TCI Diesel (Manual Transmission) , As of 09/96

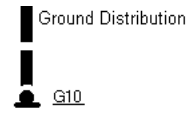


29-06-014 , Engine Control 2,5 l TCI Diesel (Manual Transmission) , As of 09/96

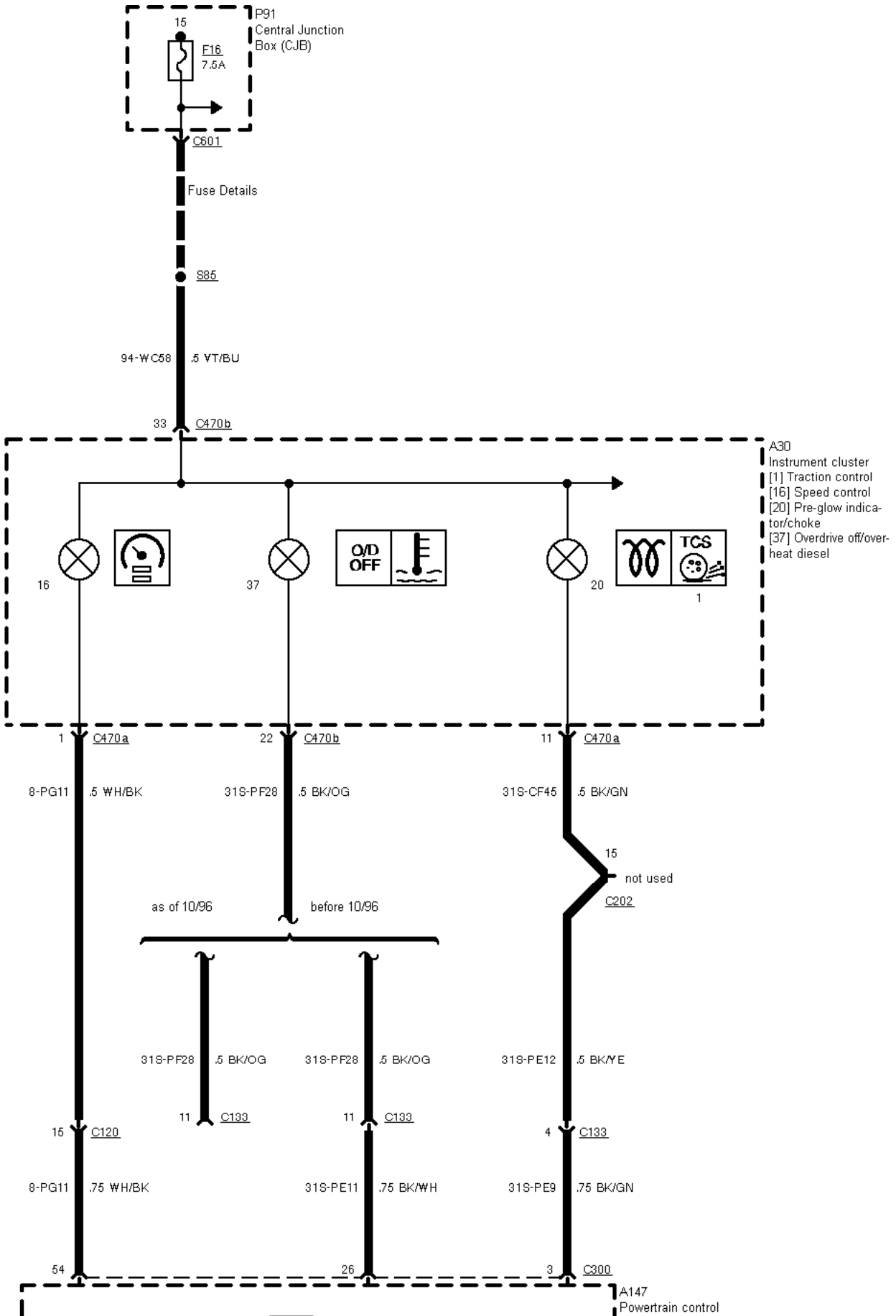


29-06-015 , Engine Control 2,5 l TCI Diesel (Manual Transmission) , As of 09/96



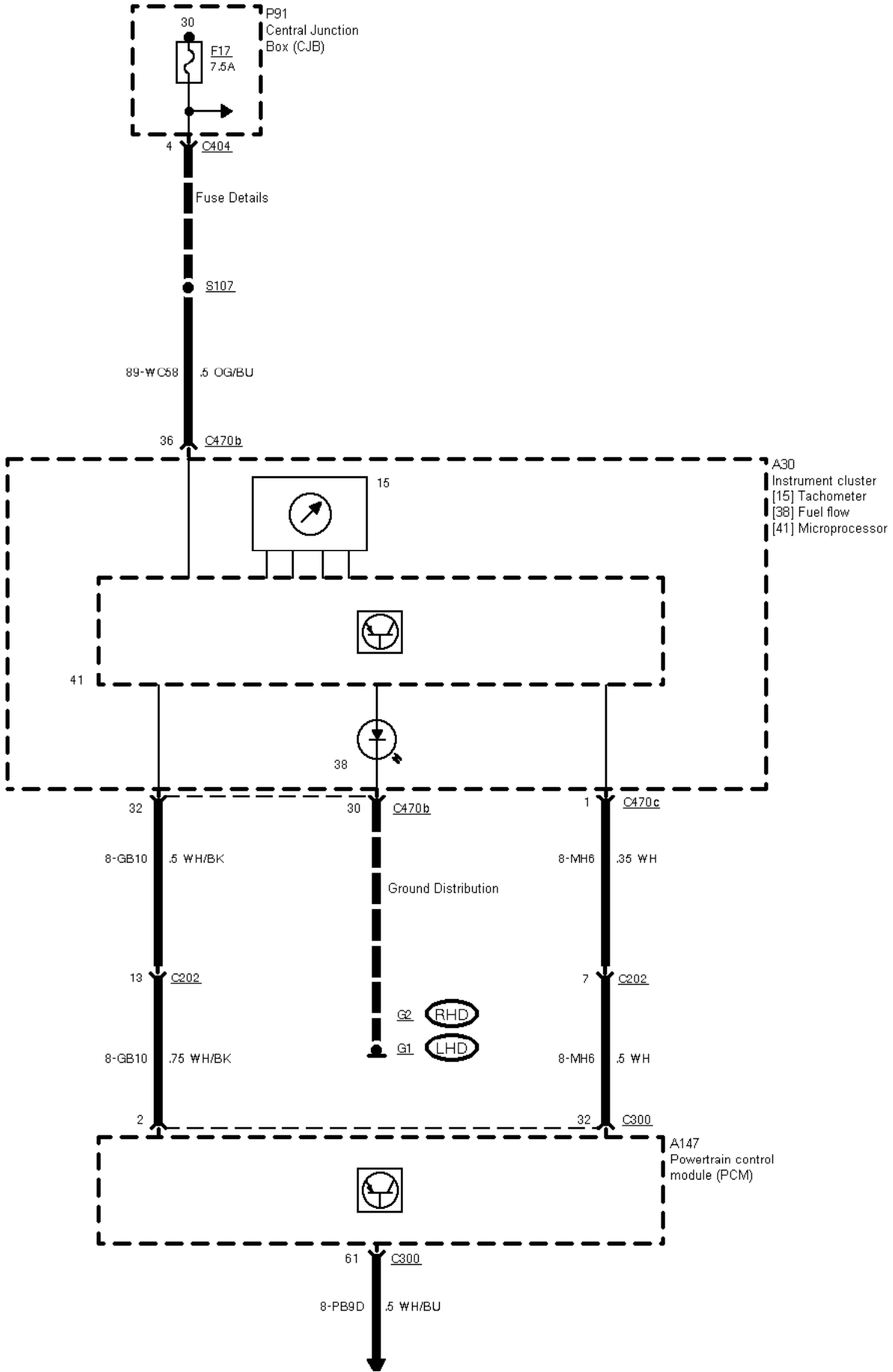


29-06-016 , Engine Control 2,5 I TCI Diesel (Manual Transmission) , As of 09/96



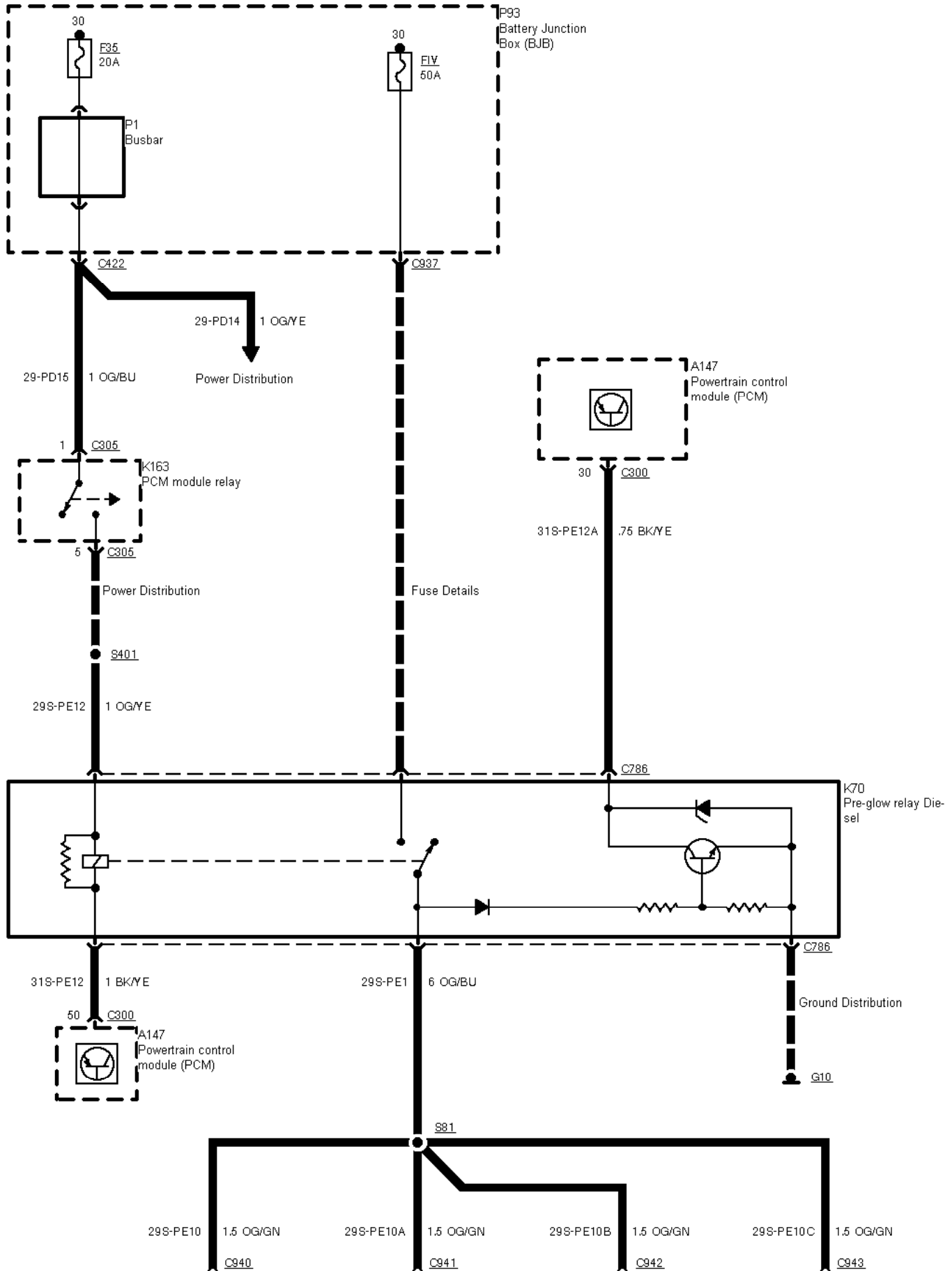


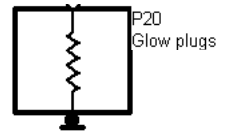
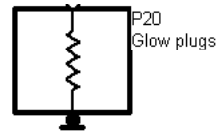
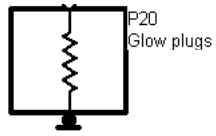
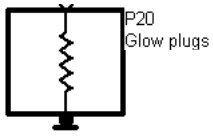
29-06-017 , Engine Control 2,5 l TCI Diesel (Manual Transmission) , As of 09/96



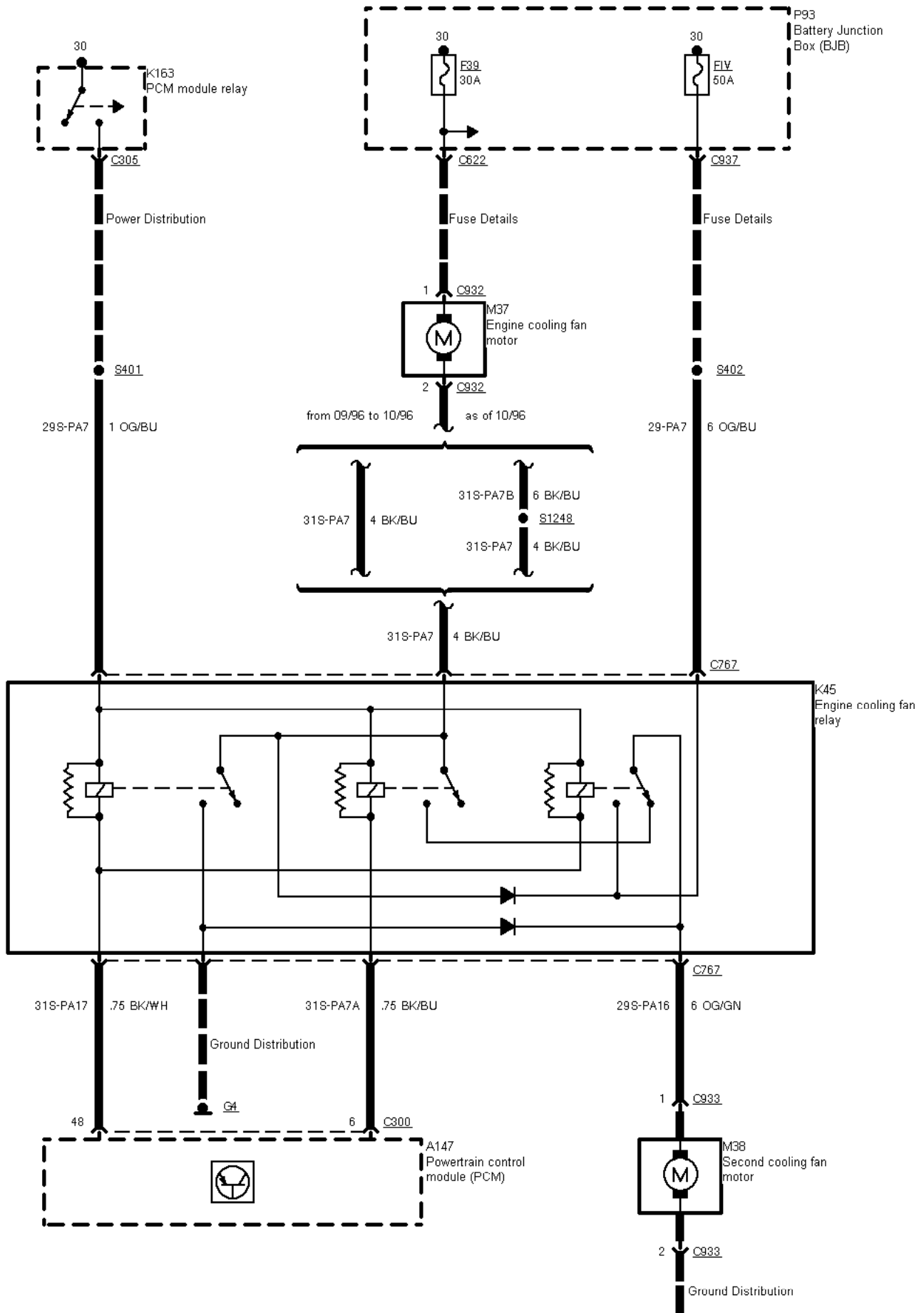
▼
Diagnostic System

29-06-018 , Engine Control 2,5 l TCI Diesel (Manual Transmission) , As of 09/96, Pre-glow system





29-06-019 , Engine Control 2,5 I TCI Diesel (Manual Transmission) , As of 09/96, Engine cooling fan





2 Circuit Description
